



GASO B.D.T.

Player Analytics Profile

RJ CRAWFORD

6-4 · 195

Shooting Guard · Langham Creek
Class of 2020

Twitter: [@rjcrawford1](#)

College Major: Business

Accolades: 2X 1st Team All District;

Academic All District; All Region 6A;

Vype Aldine All Tournament Team

[TEXAS HOOPS TV HIGHLIGHTS](#)

ANALYTIC MEASUREMENTS

True Shooting %

59.2

Free-Throw Rate %

15.5

Shot Selection GPA

2.68

True Shooting % - Adjusts standard FG% to include FT%

Free-Throw Rate % - Measures how often a player gets to the line

Shot Selection GPA - Measures the degree of shot difficulty

[CLICK HERE FOR ANALYTICS FILM BREAKDOWN](#)

Averages Have Been Taken From Three Full-Game Films

23.3
PPG

2.6
AST

3.3
REB

0.6
STLS

1.3
TO

Totals Have Been Taken From Three Full-Game Films

2FG

9/18

50%

3FG

15/37

40.5%

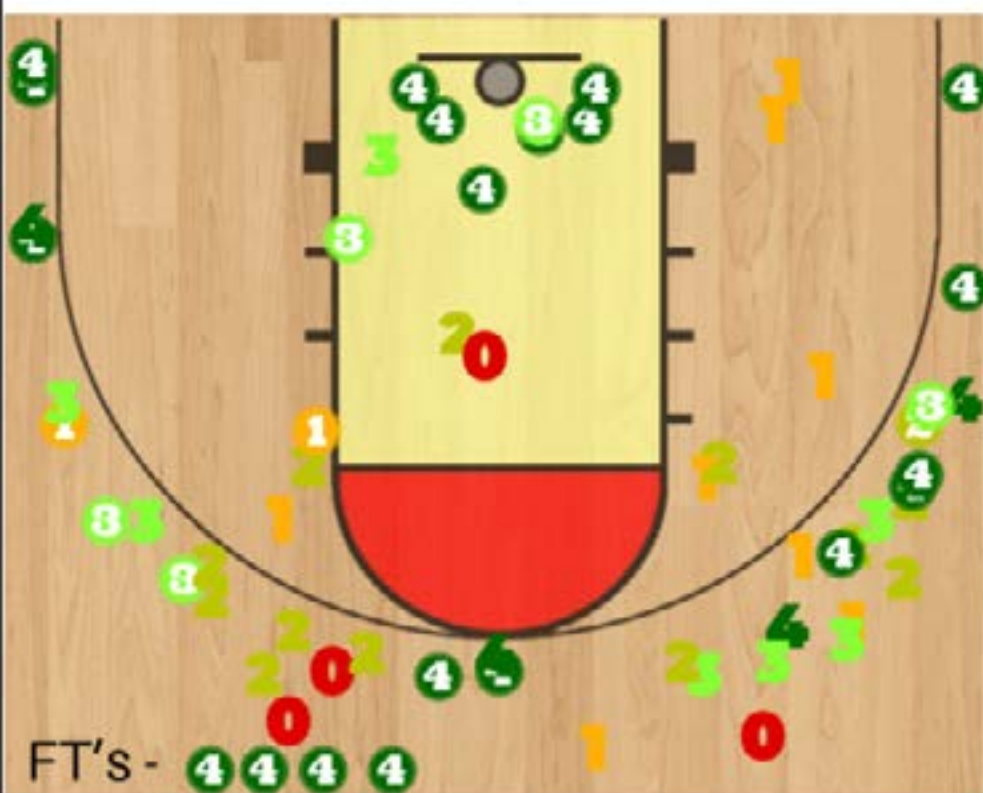
FT

7/9

77.7%

Shot Selection Chart

RJ Crawford Composite Shot Selection



FT's - 4 4 4 4

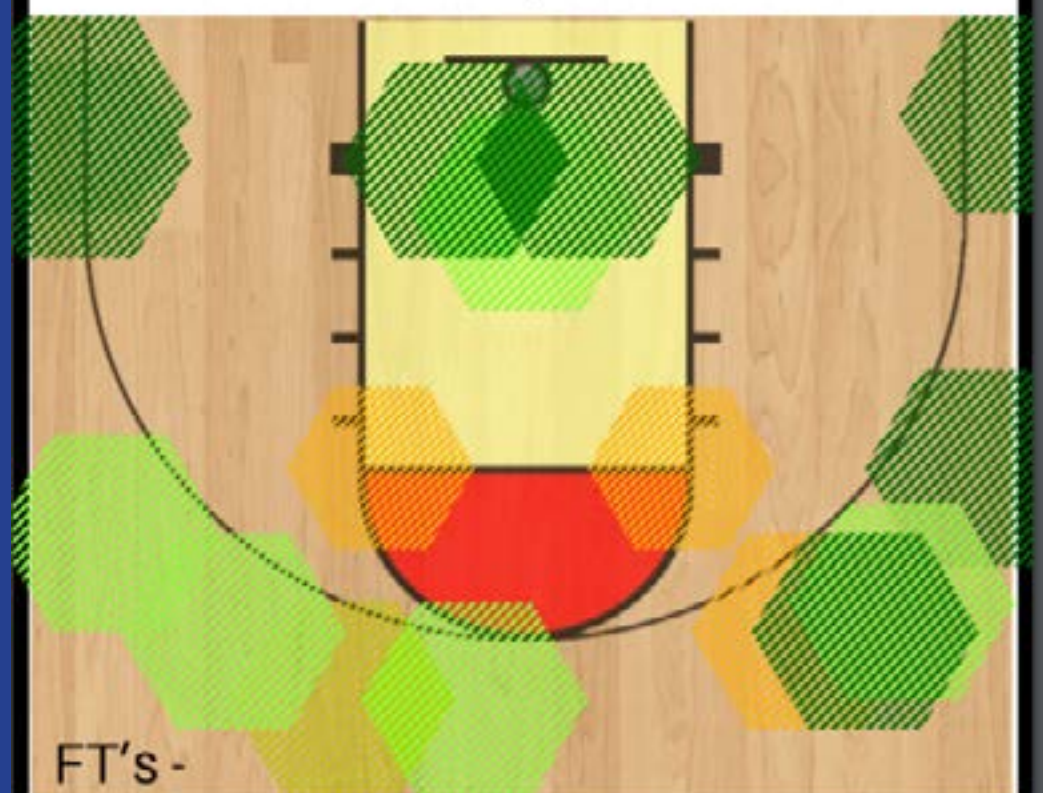
Makes	Misses
4	4
3	3
2	2
1	1
0	0

Shot Selection Chart Explained

- Inside Out 3's, Layups, FT's (per 2)
- Open 3, Floater (Just Outside Paint)
- Open Mid-Range, Contested Paint
- Contested Shot Outside of the Paint
- Turnovers

Shot Selection Chart

RJ Crawford Composite Heat Chart



FT's - 4 4 4 4

Makes	Misses
4	4
3	3
2	2
1	1
0	0

Shot Selection Chart Explained

- Inside Out 3's, Layups, FT's (per 2)
- Open 3, Floater (Just Outside Paint)
- Open Mid-Range, Contested Paint
- Contested Shot Outside of the Paint
- Turnovers

- **From the tip, R.J. Crawford gives you** exactly what you need to know about his game. He is a shooting guard that has the ability to strike from behind the three-point line with a quick release. R.J. creates the room he needs with his frame and his ball-handling.
- **At first glance you see R.J.'s long armed frame** and his solid overall build. The lean cut guard can get the ball into the paint and score, but what he displays is a dependable passer. There are times while watching R.J. that you think he may be in trouble if he over penetrates but it turns out it's the complete opposite. R.J. is able to drag the defense with him to the hole and find an open teammate for either a three-pointer or dump the ball off to a slashing teammate.
- **Either way, R.J. is impressive** with his size and length to make plays that smaller guards simply cannot. The stats prove that R.J. can score but what you have to process is what his body will be once he gets into a college weight room and gets college conditioning. Defensively, R.J. can break up a play using his length but needs to stay aggressive.

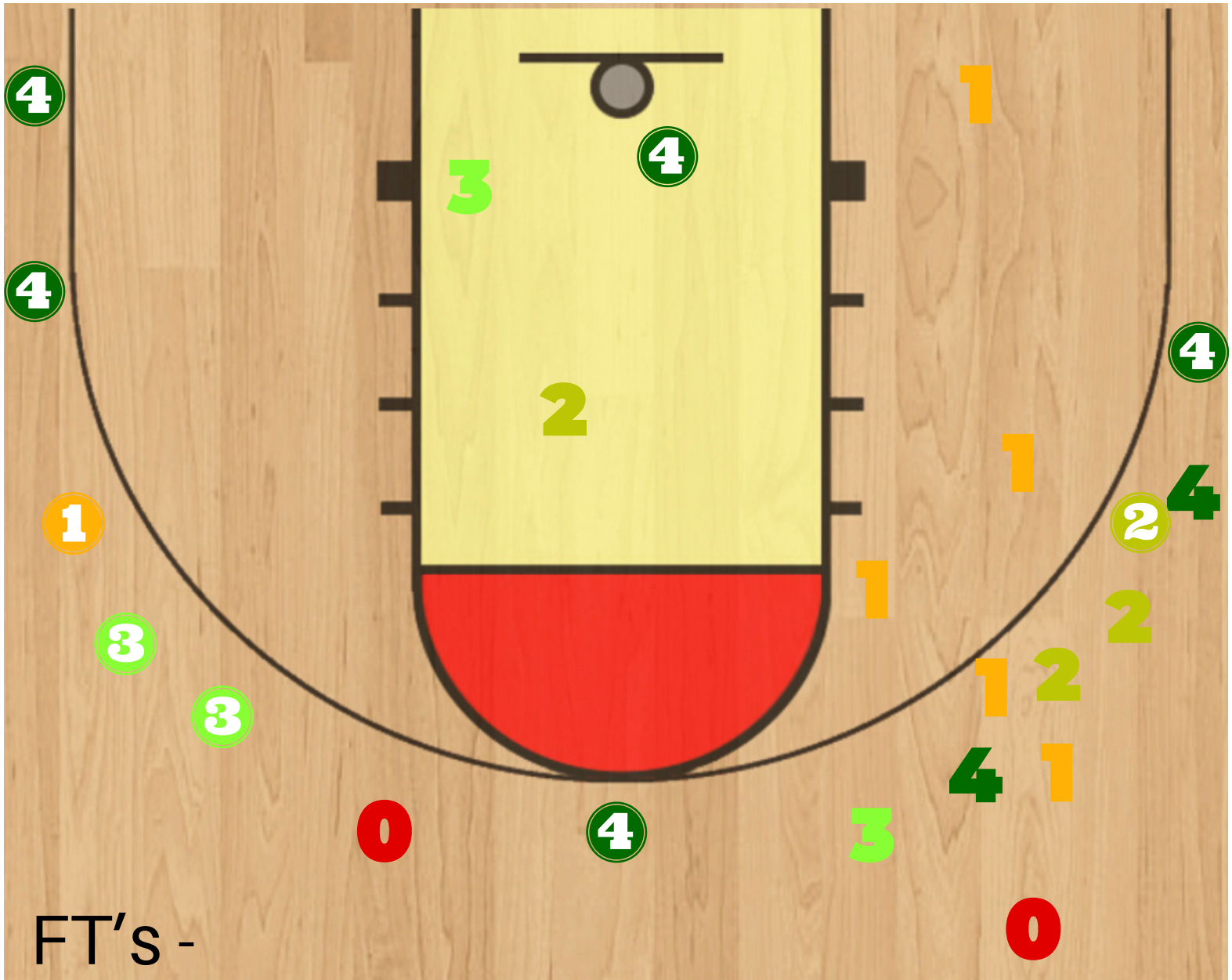
GASO BDT ANALYTICS is a product of the Great American Shoot-Out



twitter / instagram - @TexasHoopsGASO | twitter - @GASOBDT | #TexasHoopsGASO #GASO #GASOBDT

Shot Selection Chart

RJ Crawford vs Hightower



Makes Misses

4	4
3	3
2	2
1	1
0	

Shot Selection Chart Explained

- Inside Out 3's, Layups, FT's (per 2)
- Open 3, Floater (Just Outside Paint)
- Mid-Range, Contested Paint
- Contested Shot Outside of the Paint
- Turnovers

Analytic Explanation and Stats

RJ Crawford vs Hightower

True Shooting (TS%) - Adjusts standard FG% to include their FT%, encompasses all ways to score (my preferred shooting % stat).

Goal above 50%

TS% - 61.9%

Free Throw Rate (FTR%) - A measure of both how often a player/team gets to the line, as well as how often they make their free throws

Goal Above 24%

FTR% - 0%

Shot Selection GPA (SSG) - A measure of the degree of difficulty of the shots a player is taking in a game setting.

Goal Above 2.5

SSG - 2.34

Box Score

2FG's 3FG's FT's Pts Ast Rebs Stls Blks TO's

1/6

8/15

0/0

26

2

4

1

0

2

Written Breakdown

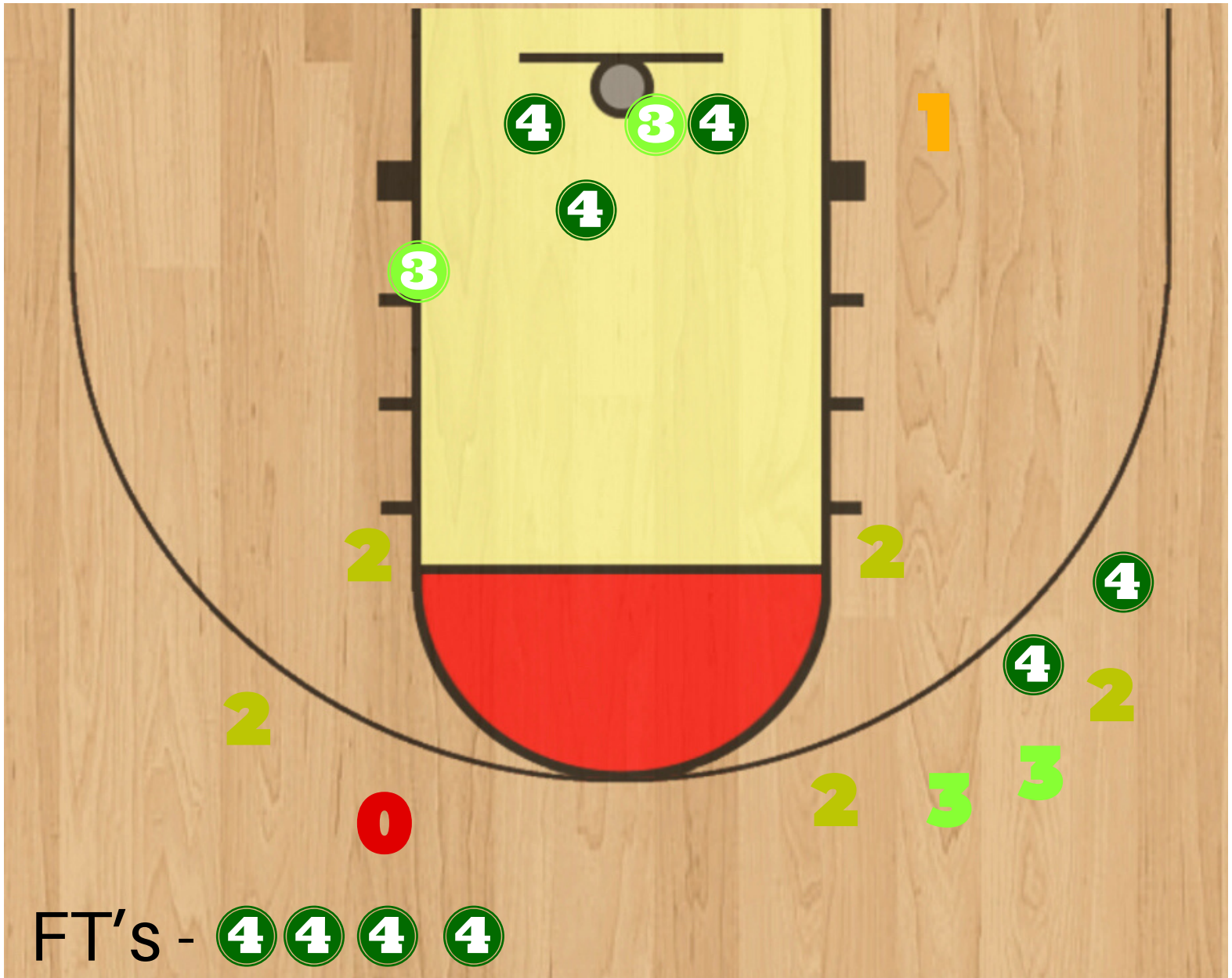
RJ Crawford vs Hightower

What my eyes are telling me:

- RJ uses his strong lengthy frame to consistently get by defenders in the half court. He can also consistently knock down the 3 off the dribble and off the drive and kick. His vision, feel, and pace allows him to put pressure on the defense in transition. Defensively RJ's length allows him to cover large areas of the floor. He blocks out consistently, and he isn't afraid of diving to go get the ball showing off his toughness and will to win.

Shot Selection Chart

RJ Crawford vs Lamar



Makes Misses

4 4

3 3

2 2

1 1

0

Shot Selection Chart Explained

- Inside Out 3's, Layups, FT's (per 2)
- Open 3, Floater (Just Outside Paint)
- Mid-Range, Contested Paint
- Contested Shot Outside of the Paint
- Turnovers

Analytic Explanation and Stats

RJ Crawford vs Lamar

True Shooting (TS%) - Adjusts standard FG% to include their FT%, encompasses all ways to score (my preferred shooting % stat).

Goal above 50%

TS% - 60.6%

Free Throw Rate (FTR%) - A measure of both how often a player/team gets to the line, as well as how often they make their free throws

Goal Above 24%

FTR% - 46.6%

Shot Selection GPA (SSG) - A measure of the degree of difficulty of the shots a player is taking in a game setting.

Goal Above 2.5

SSG - 2.95

Box Score

2FG's 3FG's FT's Pts Ast Rebs Stls Blks TO's

5/8

2/7

7/9

23

0

4

0

0

1

Written Breakdown

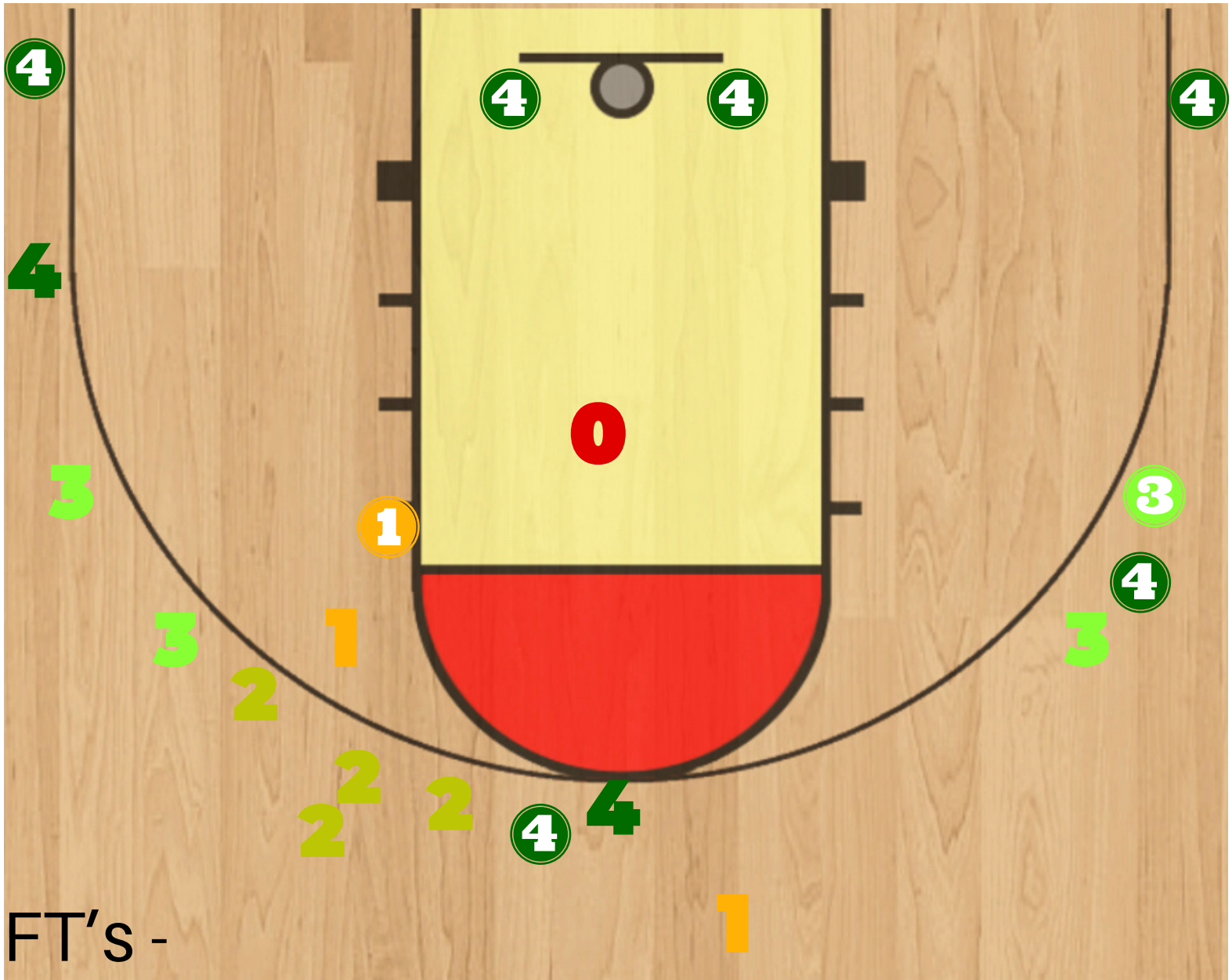
RJ Crawford vs Lamar

What my eyes are telling me:

- RJ has a nice shooting stroke, especially when his feet are set off the catch and shoot. He uses his length well to finish in traffic. He takes it strong under control and has a nice feel for changing speeds to finish.

Shot Selection Chart

RJ Crawford vs Manvel



Makes Misses

4	4
3	3
2	2
1	1
0	

Shot Selection Chart Explained

- Inside Out 3's, Layups, FT's (per 2)
- Open 3, Floater (Just Outside Paint)
- Mid-Range, Contested Paint
- Contested Shot Outside of the paint
- Turnovers

Analytic Explanation and Stats

RJ Crawford vs Manvel

True Shooting (TS%) - Adjusts standard FG% to include their FT%, encompasses all ways to score (my preferred shooting % stat).

Goal above 50%

TS% - 55.2%

Free Throw Rate (FTR%) - A measure of both how often a player/team gets to the line, as well as how often they make their free throws

Goal Above 24%

FTR% - 0

Shot Selection GPA (SSG) - A measure of the degree of difficulty of the shots a player is taking in a game setting.

Goal Above 2.5

SSG - 2.75

Box Score

2FG's 3FG's FT's Pts Ast Rebs Stls Blks TO's

7/11

5/11

2/4

31

8

3

2

0

1

Written Breakdown

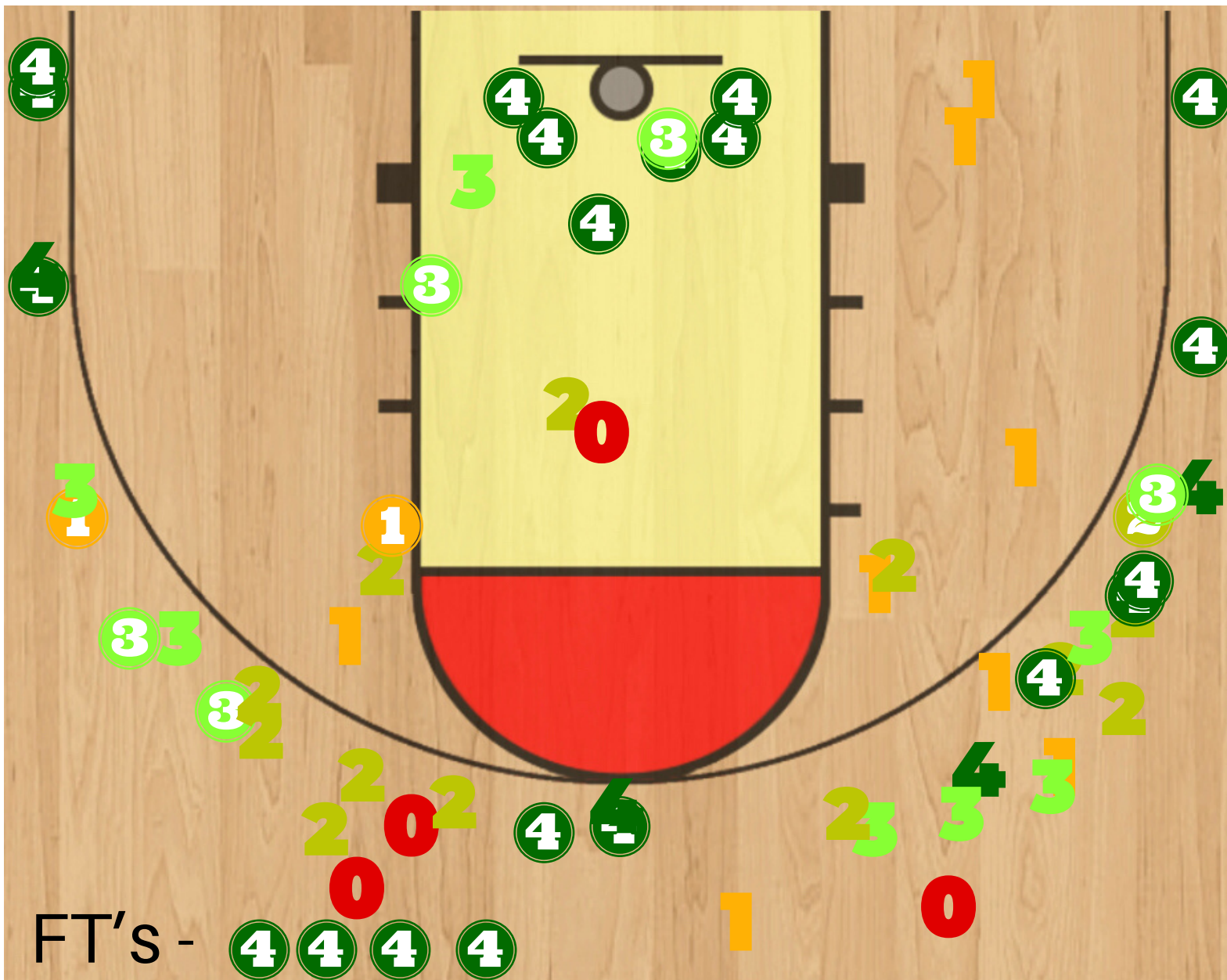
RJ Crawford vs Manvel

What my eyes are telling me:

- RJ Is very productive when he penetrates, he seems to draw attention every time he puts the ball on the floor. He sees the floor nicely and gets the ball where it needs to be based on how the defense is playing. He also shoots the ball very well, he is at his best when he catches and shoots. He has tons of upside because of his size and length.

Shot Selection Chart

RJ Crawford Composite Shot Selection



Makes Misses

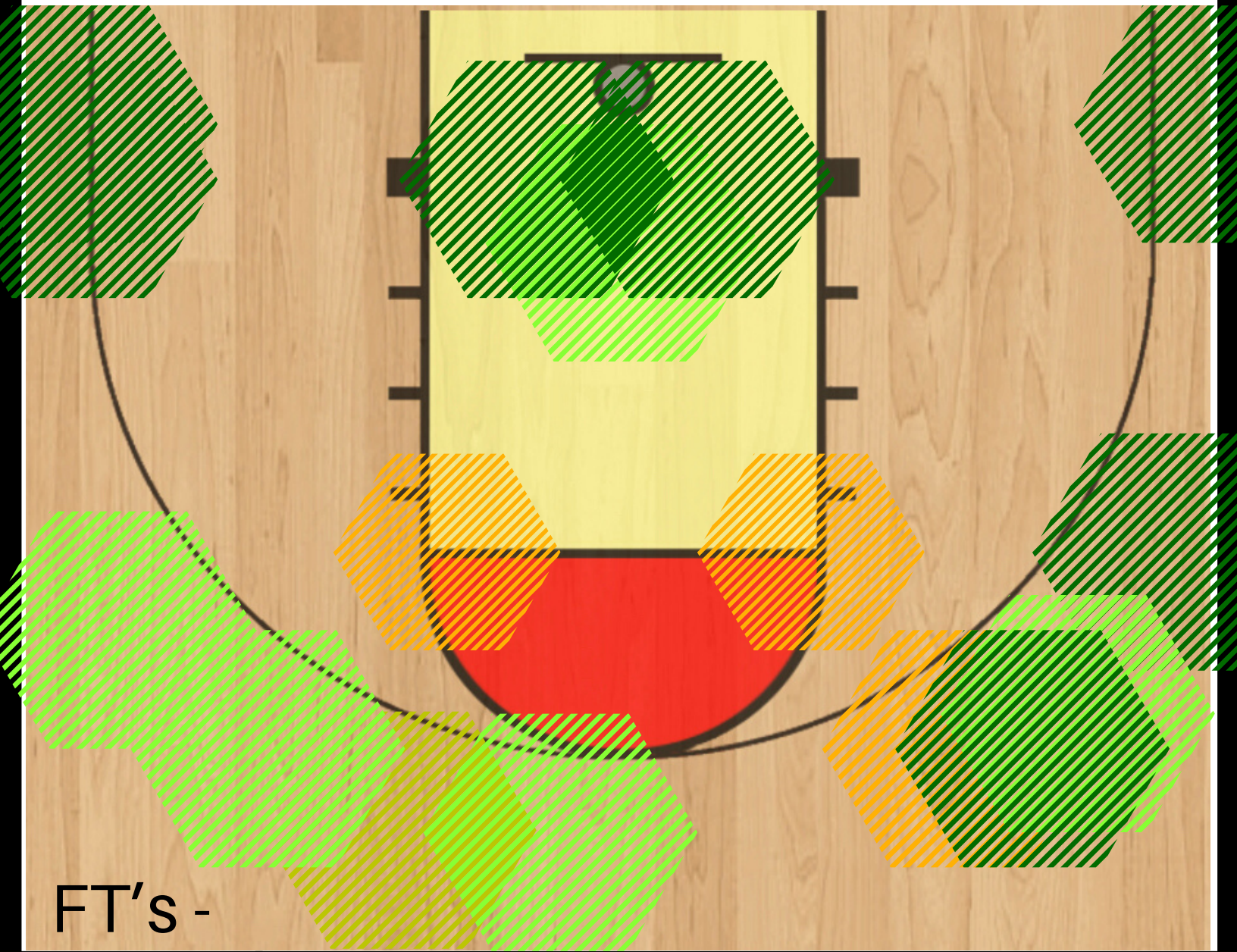
4	4
3	3
2	2
1	1
0	

Shot Selection Chart Explained

- Inside Out 3's, Layups, FT's (per 2)
- Open 3, Floater (Just Outside Paint)
- Open Mid-Range, Contested Paint
- Contested Shot Outside of the Paint
- Turnovers

Shot Selection Chart

RJ Crawford Composite Heat Chart



Makes Misses

4

4

3

3

2

2

1

1

0

Shot Selection Chart Explained

- Inside Out 3's, Layups, FT's (per 2)
- Open 3, Floater (Just Outside Paint)
- Open Mid-Range, Contested Paint
- Contested Shot Outside of the Paint
- Turnovers

Analytic Explanation and Stats

RJ Crawford Composite

True Shooting (TS%) - Adjusts standard FG% to include their FT%, encompasses all ways to score (my preferred shooting % stat).

Goal above 50%

TS% - 59.2%

Free Throw Rate (FTR%) - A measure of both how often a player/team gets to the line, as well as how often they make their free throws

Goal Above 37%

FTR% - 15.5%

Shot Selection GPA (SSG) - A measure of the degree of difficulty of the shots a player is taking in a game setting.

Goal Above 2.5

SSG - 2.68

Box Score

2FG's 3FG's FT's Pts Ast Rebs Stls Blks TO's

3/6

5/12.3

2.3/3

23.3

2.6

3.3

.6

0

1.3

RJ Crawford - Film Feedback

Film Feedback vs Hightower

- I'm not sure if it's the team they are playing, or a coaching decision but you aren't crashing the offensive boards often.
- You leave your feet when you pass quite a bit. I'm not opposed to leaving your feet to MAKE the pass, but I feel as if you leave your feet not having decided where the ball is going.
- You do a great job of blocking out consistently, but after the block out (when you've tracked where the ball is going) I'd love to see you release and go get the ball.
- Would love to see you attack more and get to the foul line. You have the body to really finish and the consistent stroke to knock down FT's.

RJ Crawford - Film Feedback

Film Feedback vs Lamar

- Be more productive in other areas, not just scoring.
- Go to the boards and use your size and length as a guard to rebound.
- Anticipate more defensively, you are capable of getting a lot of deflections.
- Up the overall energy.

Film Feedback vs Manvel

- A lot of standing around while playing against the zone defense.
- Move without the ball, be more assertive and find different ways to get involved.
- Look for gaps in the defense when the ball is opposite of you.

RJ Crawford - Analytic Feedback

Analytic Feedback

- True Shooting % - Really really good. Not much else to say. You make your FT's and you make your shots.
- Free Throw Rate % - 15.53% is not bad, but I am afraid It Is Inflated. We saw 2 games In which you shot 0 FT's and 1 game where you shot 9 (2 came from a tech and 4 came from 1 in 1 late In the game). It also Is a stat that is Indicative that you settle for jump shots over attacking the rim. I would challenge you to get to the line especially with your elite basketball body.
- Shot Selection GPA - Your shot selection was very good, which tells me you understand the game. You shot 20 "4's" and you were 16/20 when you shot a layup or a feet set 3. When you chose a more difficult route, and shot "1's" you were 2/10. Continue to play offense within yourself, when you do you can constantly put It In the bucket.